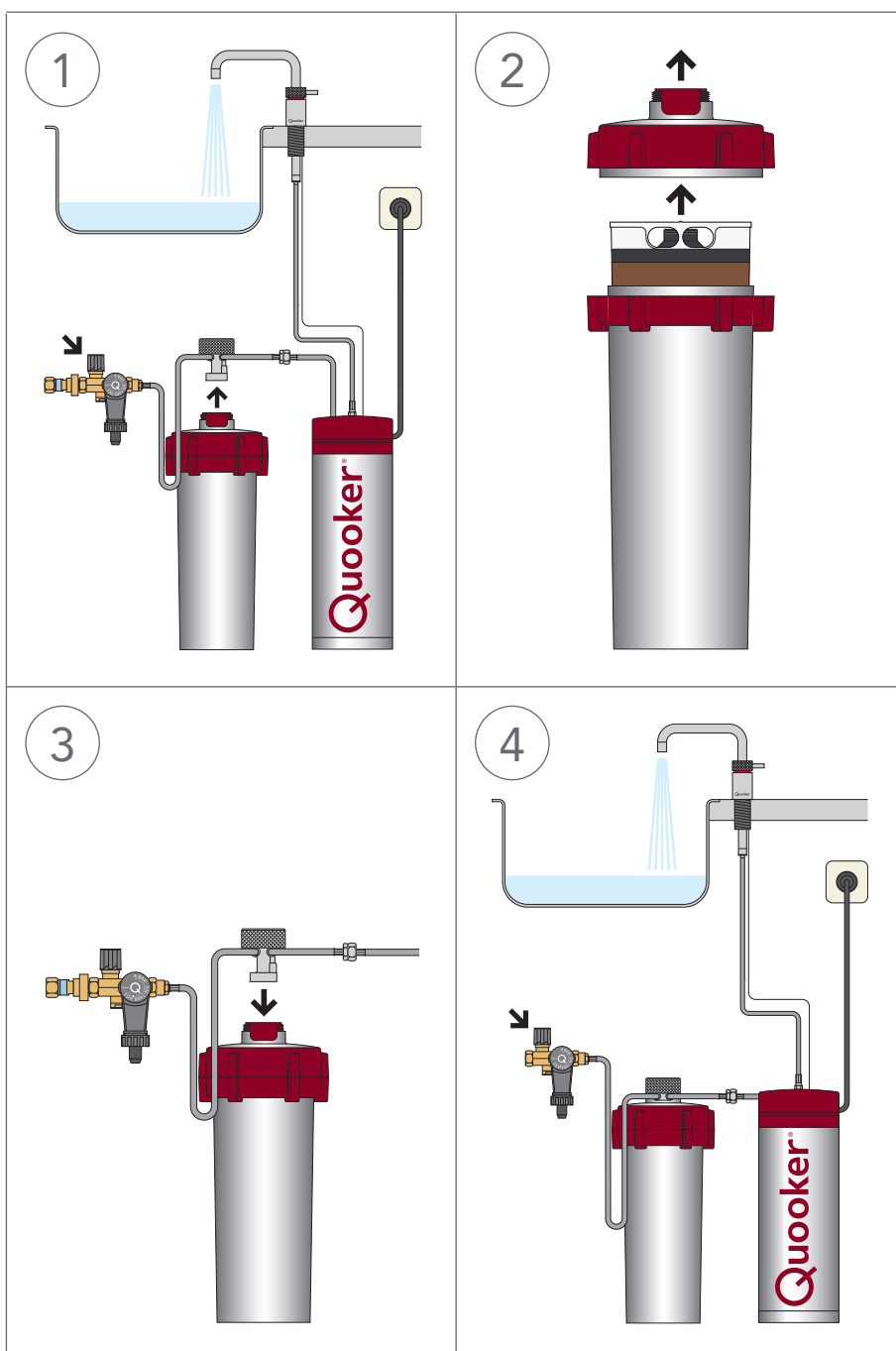


Replacing Scale Control cartridge



Replacing the cartridge

- The cartridge must be replaced before it becomes saturated.
- To check whether the cartridge is saturated we recommend measuring the total hardness of the Quooker water with the test kit around the cartridge's expected expiry date. If the cartridge is saturated, the water hardness of the Quooker water will be equal to that of tap water. Please allow the Quooker water to cool before performing the test. If you still have any questions after reading this manual, please feel free to contact our service department on +44 (0)207 9233355.



1 Disconnecting

Close the stop valve on the inlet combination. Open the boiling-water tap to release any pressure in the system, and close the tap again. Disconnect the head by unscrewing the grooved knob on top of the Scale Control and remove the Scale Control from the kitchen cupboard.

2 Replacing

Unscrew the lid and replace the old cartridge with a new one. Screw the lid onto the container until it clicks into place.

3 Placing

Return the Scale Control to the cupboard. Ensure that the grips of the lid and the container are aligned. Screw the head firmly into the lid.

4 Flushing

Open the stop valve on the inlet combination. Open the boiling-water tap to expel any air. Leave the water running until it runs clear. Switch on the tank. The Quooker is ready for use as soon as the water has heated up.

Hardness table

The left side of the table shows the reduced water hardness, derived from the mains water hardness and the Scale Control setting (☉ or ●).

The right side of the table shows the lifespan of the cartridge, derived from the mains water hardness, the Scale Control setting and the type of Quooker tank used.* For optimum protection against limescale, we recommend reducing the water hardness to a grade between 3 °dH and 9 °dH. For use with a Quooker PRO 3-VAQ, it is best to set the Scale Control to maximum (●). For continuous optimum performance replace the cartridge at the end of the lifespan.

Total hardness (°dH)			Cartridge lifespan (in months)						
Mains water	Quooker water w/ Scale Control		PRO3-VAQ	PRO7-VAQ		COMBI		COMBI+	
	☉	●		☉	●	☉	●	☉	●
10	5,0	3,0	36	20	14	17	12	20	14
11	5,5	3,3	33	18	13	15	11	18	13
12	6,0	3,6	30	17	12	14	10	17	12
13	6,5	3,9	28	16	11	13	9	16	11
14	7,0	4,2	26	14	10	12	9	14	10
15	7,5	4,5	24	14	10	11	8	14	10
16	8,0	4,8	23	13	9	11	8	13	9
17	8,5	5,1	21	12	8	10	7	12	8
18	9,0	5,4	20	11	8	9	7	11	8
19	–	5,7	19	–	8	–	6	–	8
20	–	6,0	18	–	7	–	6	–	7
21	–	6,3	17	–	7	–	6	–	7
22	–	6,6	16	–	7	–	5	–	7
23	–	6,9	16	–	6	–	5	–	6
24	–	7,2	15	–	6	–	5	–	6
25	–	7,5	14	–	6	–	5	–	6
26	–	7,8	14	–	6	–	5	–	6
27	–	8,1	13	–	5	–	4	–	5
28	–	8,4	13	–	5	–	4	–	5
29	–	8,7	12	–	5	–	4	–	5
30	–	9,0	12	–	5	–	4	–	5

Enter the replacement date for the cartridge in the table below. Keeping this table in a handy place will remind you to order a new cartridge on time.

	Lifespan	Installation date	Replacement date
Cartridge 1			
Cartridge 2			

* The cartridge lifespan is based on the average consumption of Quooker water for each type of Quooker tank: PRO3-VAQ, 3 litres/day; PRO7-VAQ, 7 litres/day; COMBI, 8 litres/day; COMBI+, 7 litres/day.



www.quooker.co.uk