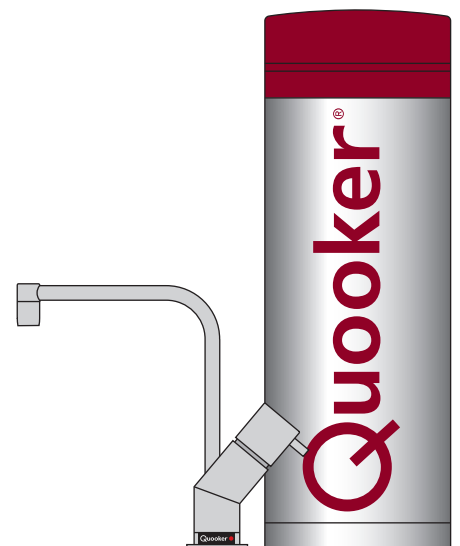


Installation guide Scale Control

Before installing read this guide first



Introduction

How the Quooker Scale Control works

The Scale Control reduces the hardness of the water, preventing limescale from building up in the tank. The Scale Control considerably lengthens the lifespan of your Quooker and improves the taste of Quooker water. The Scale Control consists of a cartridge within a pressure resistant container. As water flows through the cartridge, the hardness is reduced by an ion-exchange resin. The cartridge must be replaced after a certain period. This period depends on consumption of Quooker water and the water hardness. For continuous optimum performance replace the cartridge at the end of the lifespan.

Testing the water hardness

Before installing the Scale Control, test the water hardness with the test kit provided. Then use the enclosed hardness table to determine the expected cartridge lifespan. Part A of this guide features detailed instructions on how to do this.

If no Quooker has previously been installed

To install the Scale Control, first follow part A through C of the Quooker tank installation guide. Proceed with steps 2 and 3 of part B1, B2 or B3 (corresponding to the type of Quooker tank) of this guide. Finally, complete part D and E of the Quooker tank installation guide.

If a Quooker is already installed

To install the Scale Control, follow part B1, B2 or B3 (corresponding to the type of Quooker tank) of this guide.

Technical specifications

| | |
|---------------------------|--------|
| Height | 420 mm |
| Base diameter | 130 mm |
| Hand grip diameter | 180 mm |
| Maximum pressure | 10 bar |
| Mounting bracket optional | yes |

Contents of the package

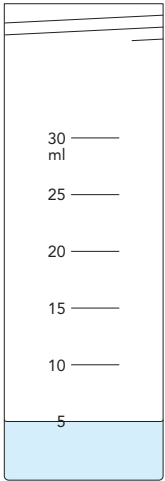
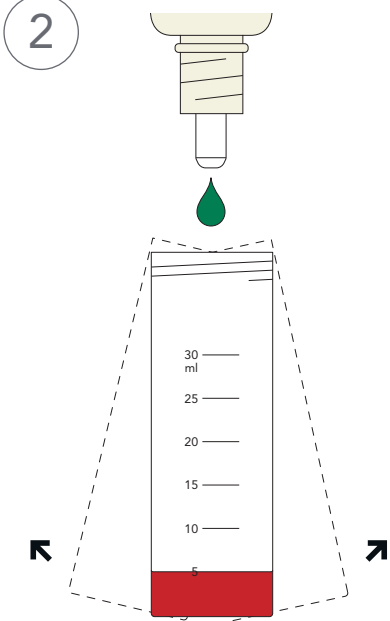
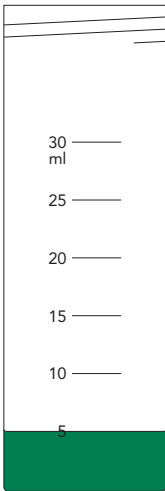
1. Scale Control
2. Total hardness test kit
3. Reducing coupler and fibre washers



A

Hardness testing

- Test the water hardness with the test kit as described below to determine the expected cartridge lifespan.

| | |
|---|---|
| <p>1</p>  | <p>2</p>  |
| <p>3</p>  <p>👉 + 👉 + ... = °dH</p> | |

1 Filling test tube

First rinse the test tube with tap water and then fill it up to 5 ml.

2 Adding reagent

Hold the bottle containing the reagent directly over the test tube and add the solution one drop at a time. Shake the test tube after adding each drop, to ensure that the dye dissolves properly. Count how many drops are required to change the colour of the water from red to green.

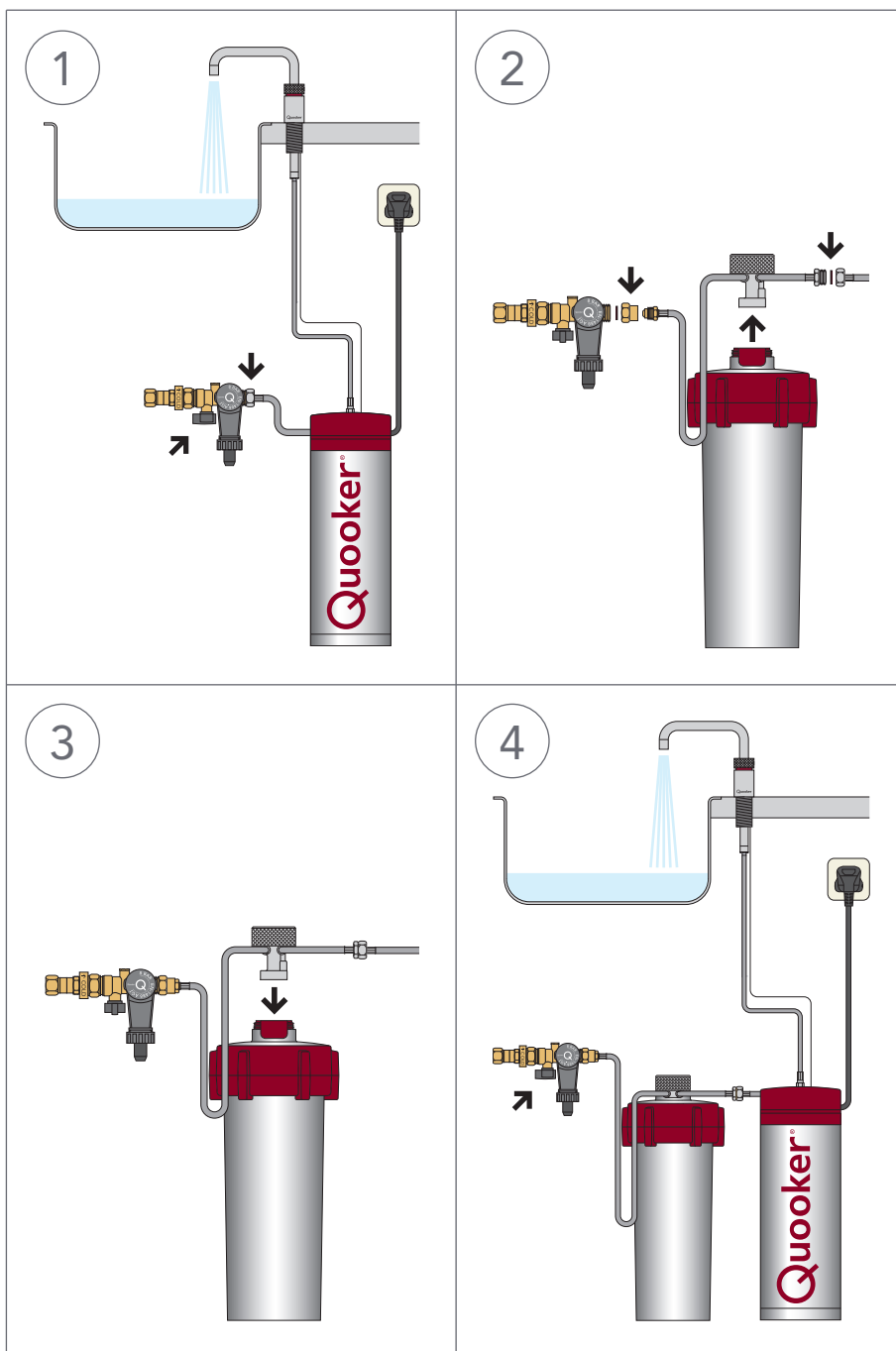
3 Determining hardness

The number of drops added when the colour of the water transitions indicates the water hardness, expressed as a grade of German hardness (°dH). For instance 10 drops indicates a water hardness of 10°dH. After each test, rinse the test tube thoroughly with water.

B₁

Installation with PRO-VAQ (E)

- Follow the steps below for installing the Scale Control with a Quooker PRO3-VAQ, PRO7-VAQ, PRO3-VAQ E or PRO7-VAQ E tank.
- The 'Q' on top of the tank is the on/off switch.



1 Disconnecting

Switch off the tank. Leave the plug in the socket. Open the boiling-water tap and let the water run cold. Close the stop valve on the inlet combination. Close the tap. Disconnect the tank inlet hose from the inlet combination.

2 Connecting

Disconnect the head by unscrewing the grooved knob on top of the Scale Control. Connect the reducing coupler to the inlet combination with the fibre washer. Connect the Scale Control inlet hose (long) to the reducing coupler. Connect the Scale Control outlet hose (short) to the tank inlet hose with the fibre washer.

3 Placing

Place the Scale Control into the kitchen cupboard. Ensure that the grips of the lid and the container are aligned. Screw the head firmly into the lid of the Scale Control.

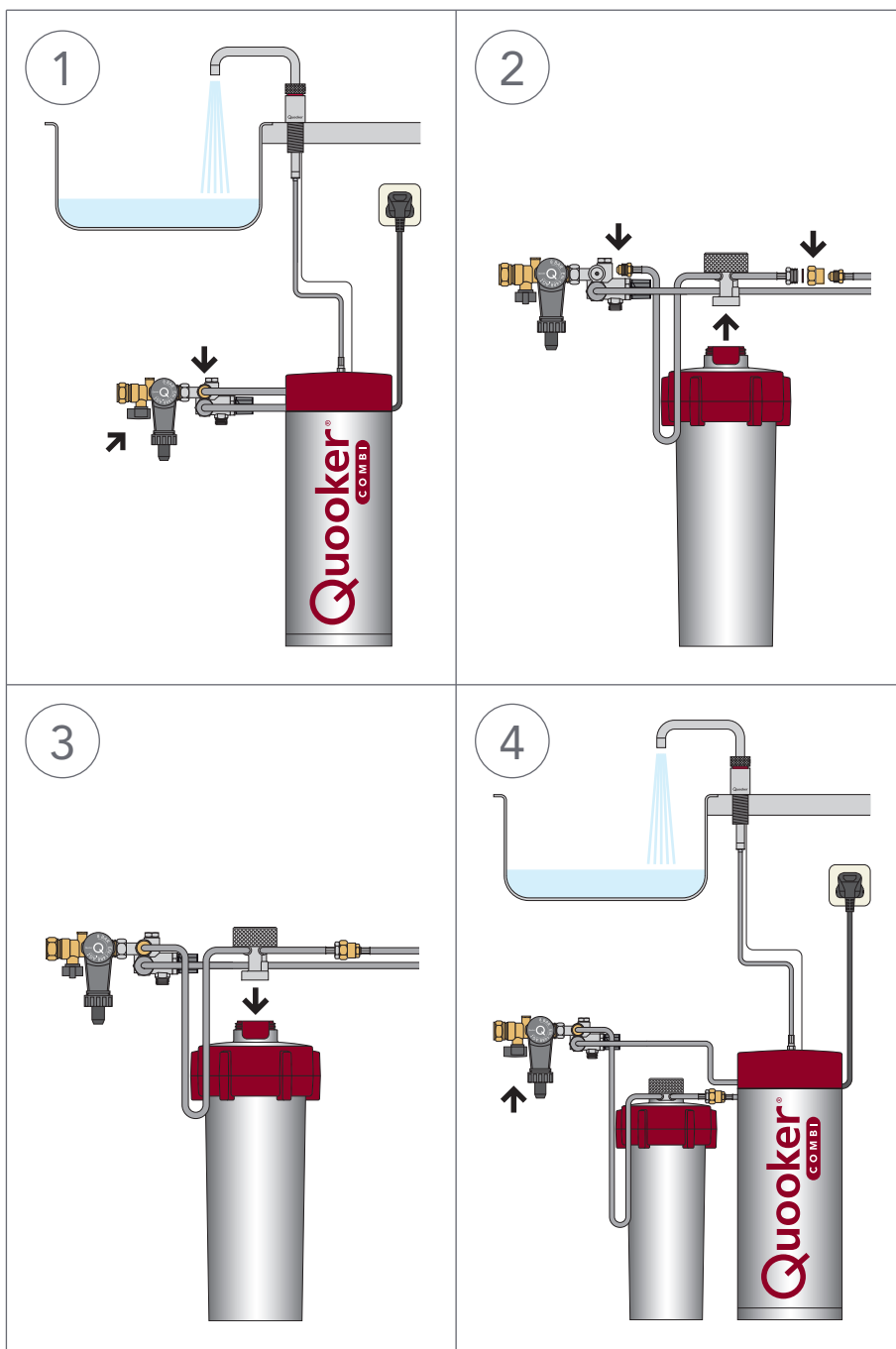
4 Flushing

Open the inlet combination stop valve and the boiling-water tap and leave the water running until it is clear. Switch on the tank. The Quooker is ready for use as soon as the water has heated up.

B₂

Installation with COMBI (E)

- Follow the steps below for installing the Scale Control with a Quooker COMBI or COMBI E tank.
- The 'Q' on top of the tank is the on/off switch.



1 Disconnecting

Switch off the tank. Leave the plug in the socket. Open the boiling-water tap and let the water run cold. Close the stop valve on the inlet combination. Close the tap. Disconnect the tank inlet hose from the mixing valve.

2 Connecting

Disconnect the head by unscrewing the grooved knob on top of the Scale Control. Connect the Scale Control inlet hose (long) to the mixing valve. Connect the Scale Control outlet hose (short) to the tank inlet hose with the reducing coupler and the fibre washer.

3 Placing

Place the Scale Control into the kitchen cupboard. Ensure that the grips of the lid and the container are aligned. Screw the head firmly into the lid of the Scale Control.

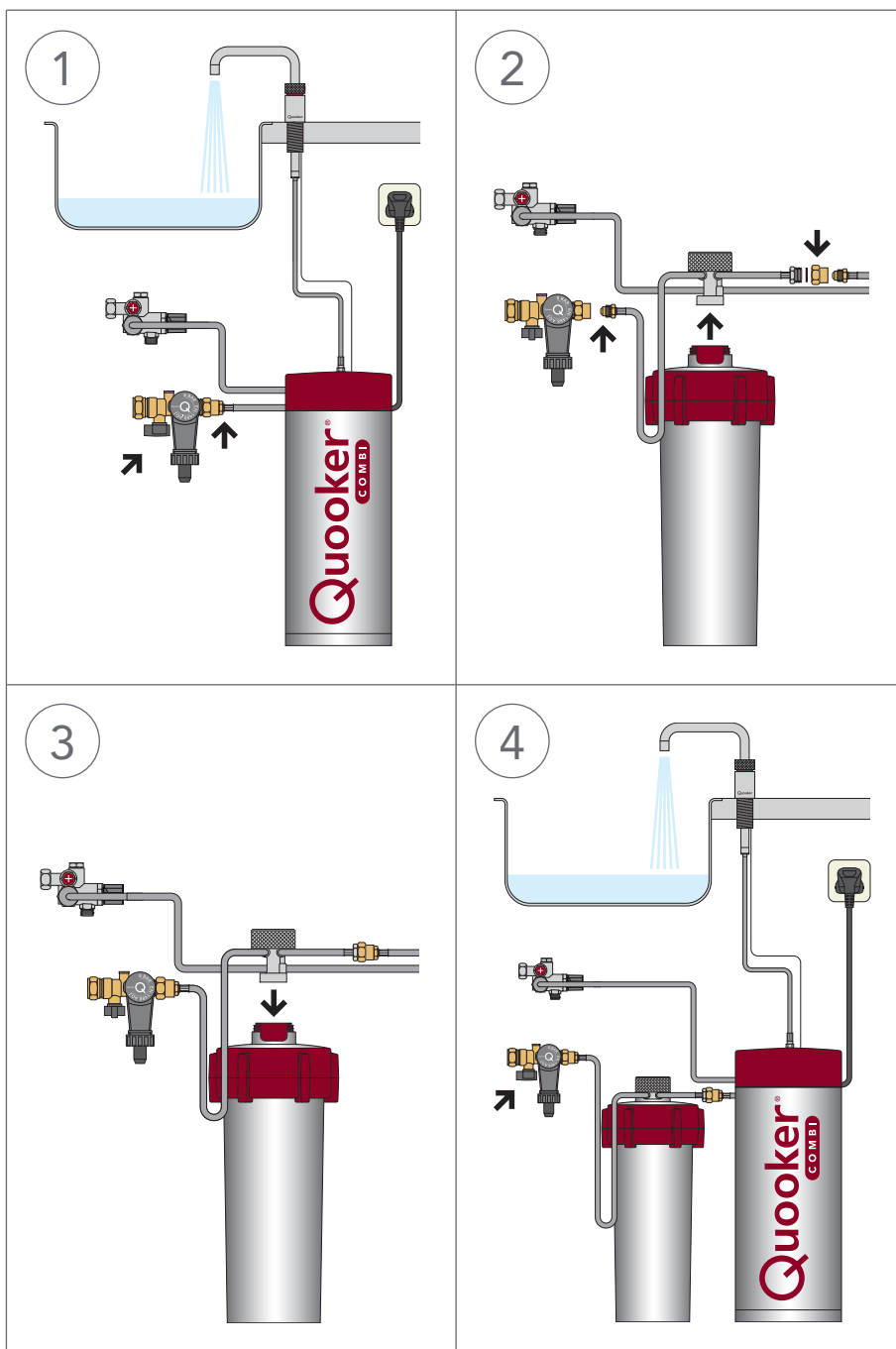
4 Flushing

Open the stop valve on the inlet combination. Open the boiling-water tap and leave the water running until it is clear. Switch on the tank. The Quooker is ready for use as soon as the water has heated up.

B₃

Installation with COMBI+ (E)

- Follow the steps below for installing the Scale Control with a Quooker COMBI+ or COMBI+ E tank.
- The 'Q' on top of the tank is the on/off switch.



1 Disconnecting

Switch off the tank. Leave the plug in the socket. Open the boiling-water tap and let the water run cold. Close the inlet combination stop valve. Close the tap. Disconnect the tank inlet hose from the reducing coupler that has already been fitted to the inlet combination.

2 Connecting

Disconnect the head by unscrewing the grooved knob on top of the Scale Control. Connect the Scale Control inlet hose (long) to the reducing socket on the inlet combination. Connect the Scale Control outlet hose (short) to the tank inlet hose with the reducing coupler and the fibre washer.

3 Placing

Place the Scale Control into the kitchen cupboard. Ensure that the grips of the lid and the container are aligned. Screw the head firmly into the lid of the Scale Control.

4 Flushing

Open the inlet combination stop valve and the boiling-water tap and leave the water running until it is clear. Switch on the tank. The Quooker is ready for use as soon as the water has heated up.



www.quooker.co.uk