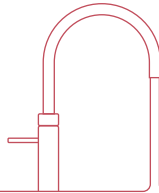
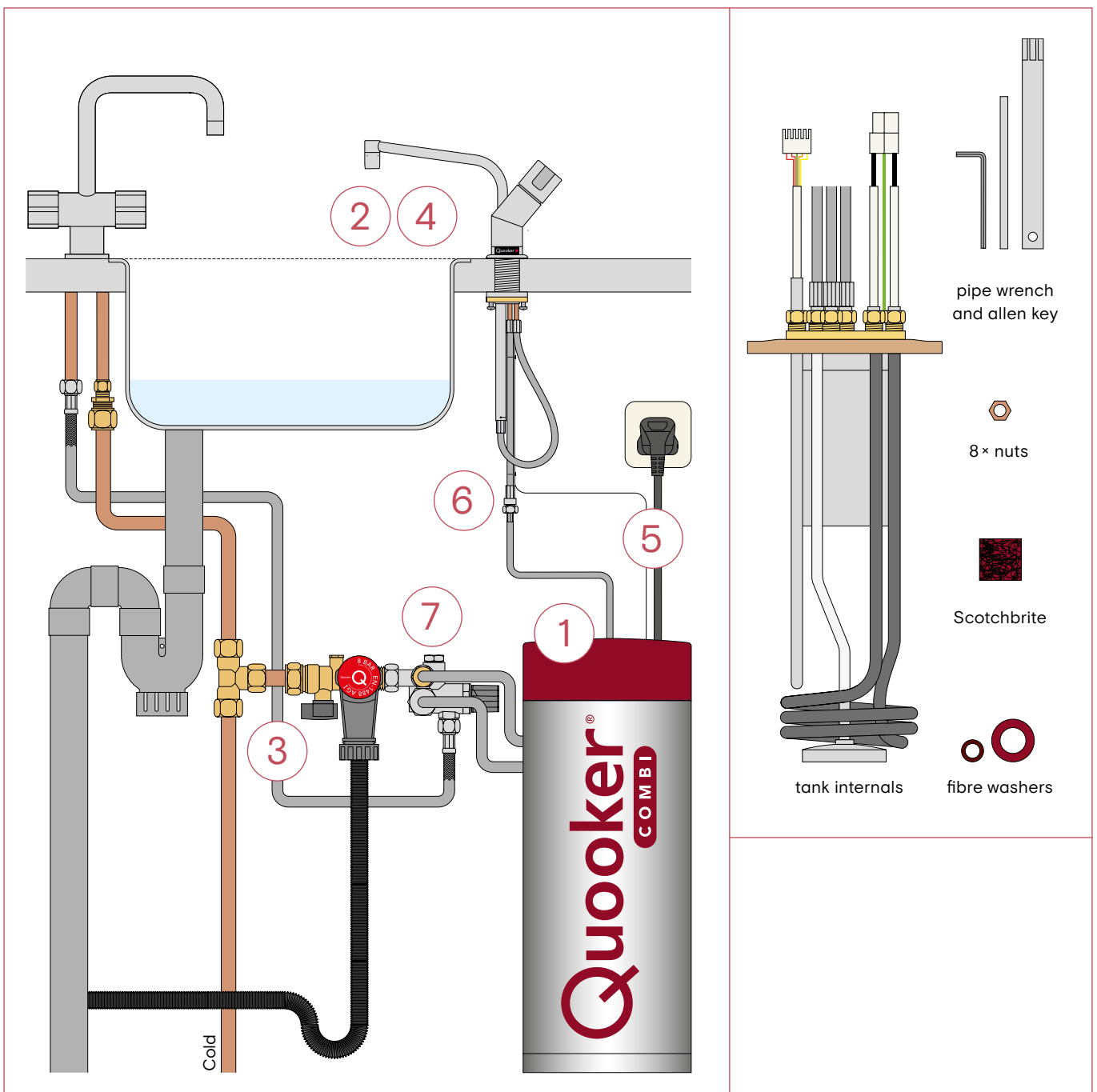


Replacing the COMBI tank internals

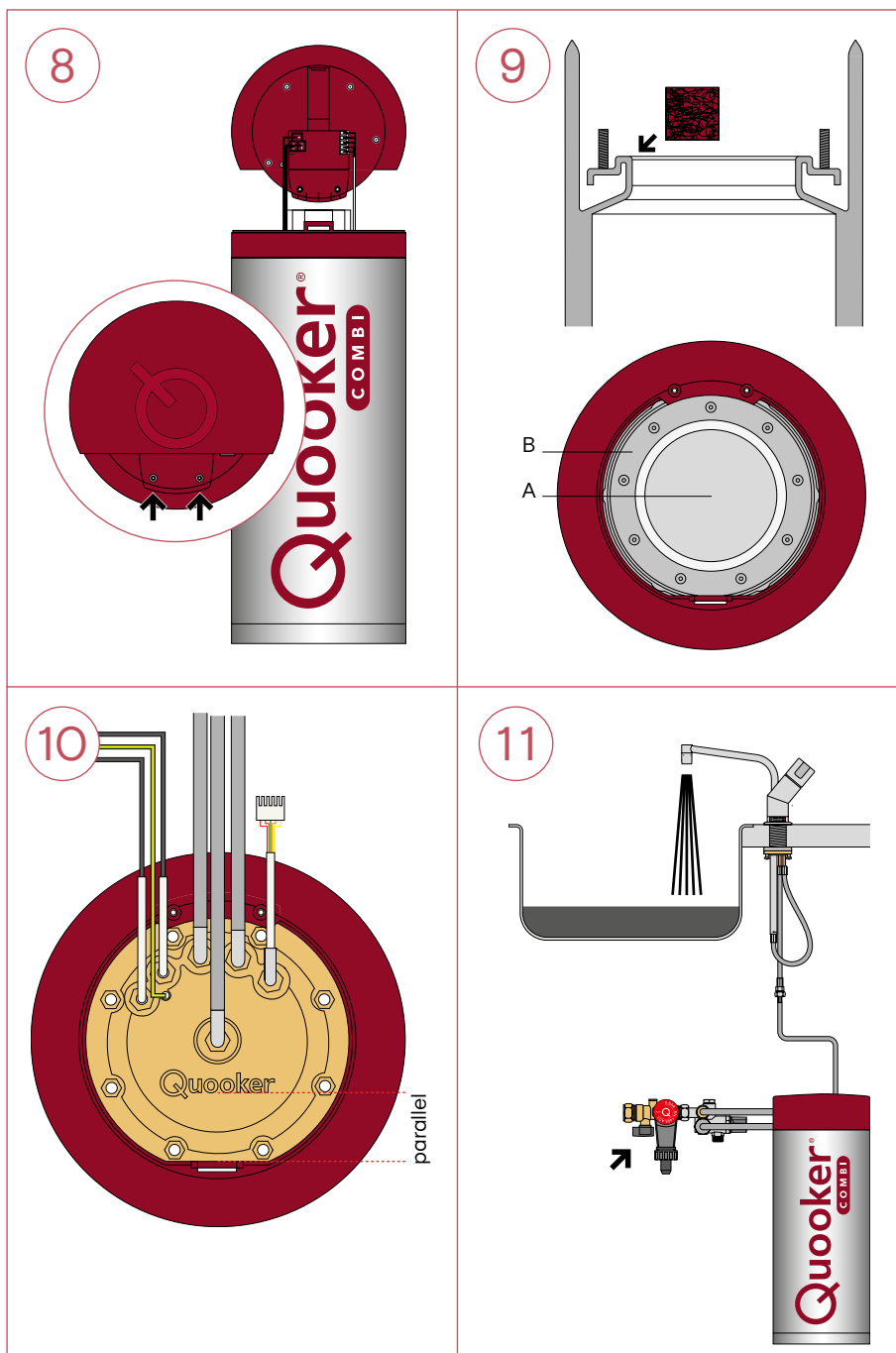


Replacing the COMBI tank internals

1. Switch off the tank with the Q-shaped button on top. Do not unplug it or switch off the power yet.
2. Open the boiling-water tap. Leave it to run until the water is completely cold and the hose between the tap and the tank has cooled down.
3. Close the stop valve (small grey knob) on the inlet combination.
4. Open the boiling-water tap. If it is depressurised, no water will flow out of it.
5. Unplug the tank and disconnect the LED cable from the back of the tank.
6. Disconnect the flexible hose between the tap and the tank by turning the nut anti-clockwise (use spanners 12 and 14).
7. Disconnect the two hoses from the mixing valve (use spanner 17 and 24). Remove the tank from the kitchen cabinet.



8. Unscrew the cap screws with the supplied allen key, remove the tank cover and disconnect the wire plugs.
9. Remove the insulation. Start with the centre piece. Use the pipe wrench to unscrew the eight nuts and remove the internals. If necessary, clean the sealing face with the supplied Scotchbrite. Rinse the inner tank with water only (A) and try to keep the water away from the studs (B). Dry the tank.
10. Install the new internals and check the position of the Quooker logo relative to the front of the red ring. Place the eight nuts and tighten them in a diagonal sequence. Replace the insulation. Plug the cable connectors into the cover. Replace the tank cover and secure the cap screws. Connect the hoses to the mixing valve and tap using the new fibre washers supplied.
11. Plug the tank back in, but do not switch it on yet. Connect the LED cable. Open the tap, then open the stop valve on the inlet combination and flush the tank through until the water is clear. Check for leaks. Switch the tank on with the Q-shaped button.



Please note

After switching on the tank, the light should be on both the tap and tank. The tank will be fully heated and ready for use in around 10-20 minutes. After it has heated up, the tap light will go off and the tank light will change to a fading in and out (heartbeat light). From time to time, unscrew the tap nozzle and descale the aerator in a vinegar-water solution. For any further questions, do not hesitate to contact our service department on 0207 923 3355 (option 3 for service) or email us at: service@quooker.co.uk.

Quooker®

Quooker UK Ltd.
Beaumont Buildings
Great Ducie Street
Manchester
M3 1PQ (UK)
+44 (0)20 79233355
info@quooker.co.uk
www.quooker.co.uk