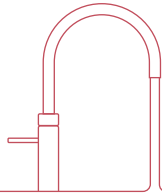
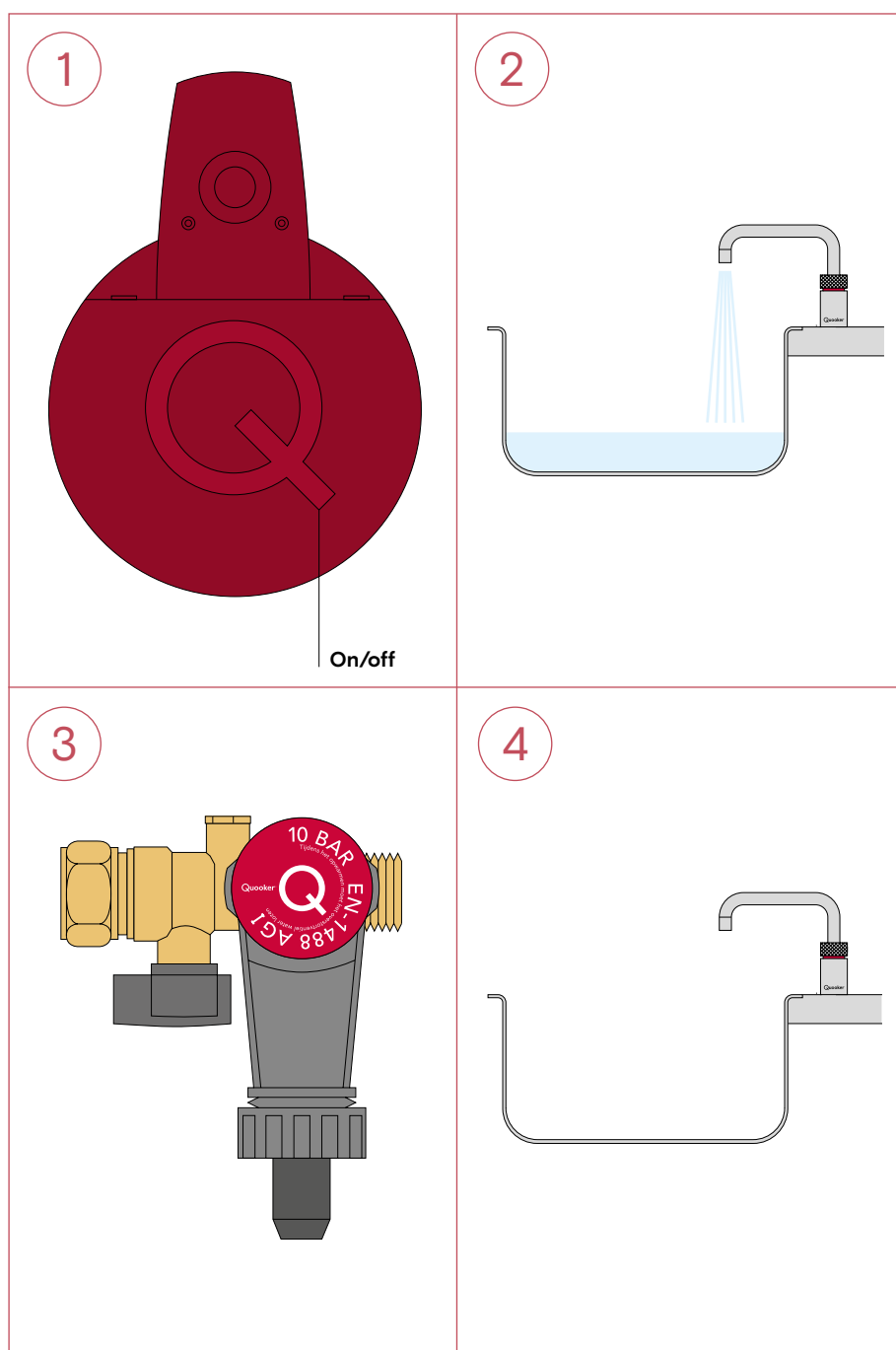


Isolating the tank



Isolating the tank

- 1 Switch off the tank by pressing the Q-shaped button on top. Leave the plug in the socket.
- 2 Turn on the boiling-water tap and cold water tap, let the water run until it is absolutely cold and the hose between tap and tank has cooled down. Turn off the tap.
- 3 Close the stop valve on the inlet combination by turning the grey lever towards you.
- 4 Actuate the boiling-water tap, if no water flows out of it is depressurised. If depressurised unplug the reservoir.



Quooker®

Quooker UK Ltd.
 Beaumont Buildings
 Great Ducie Street
 Manchester
 M3 1PQ (UK)
 +44 (0)20 79233355
 info@quooker.co.uk
 www.quooker.co.uk